



Chongqing Hengtai

For Train Parts



0086 23 61600060



sales@htee.com.cn

Company Catalog



重庆恒泰

Add: D-13F, NO.210, Keyuan 1ST Road, Jiulongpo District Chongqing, China

Tel: 0086 23 61600060 Fax: 0086 23 68885568

E-mail: sales@htee.com.cn

Web: www.htee.com.cn

COUPLER



CONNECTOR



BRAKING



SPRING



目录

contents

1

公司简介

Company Introduction

2

部门管理

Business Departments

3

走行部

Running Gear Department

4

电气部

Electric Department

5

链接部

Coupling Department

6

制动部

Braking Department

7

其他工具及设备

Other Tools & Equipment

8

国际市场

International Marketing





公司简介

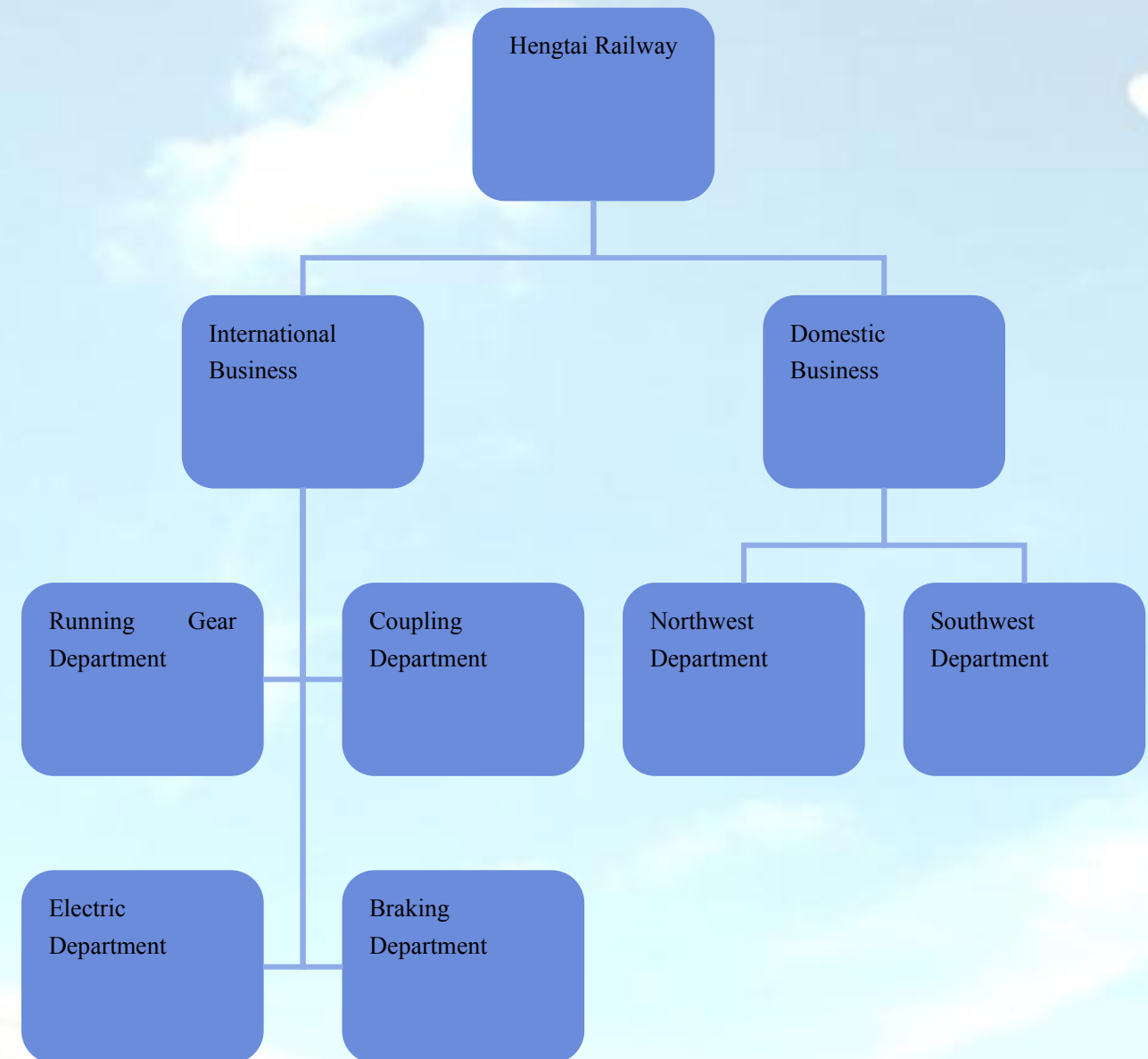
Company Introduction

Chongqing Hengtai Electromechanical Equipment Co., Ltd. is devoted to designing, researching, developing and manufacturing the products of railway vehicles and formed as a specialized integrator and supplier in railway industry. Main products cover completed parts of the vehicle car, including running gear, coupling devices, interior facilities, electric system, and etc. Especially, Hengtai owned the ability to refurbish and renovate the railway vehicles.

Hengtai is adhering to the route of design, research and development, and insisting on the developing idea of "professional is the precondition, technology is the key, quality is the goal". Jointing with manufacturers in this field that makes our products more competitive. Our developing target is to establish Chinese producing base to meet the globe market and become a integrated supplier with competitiveness.

部门管理

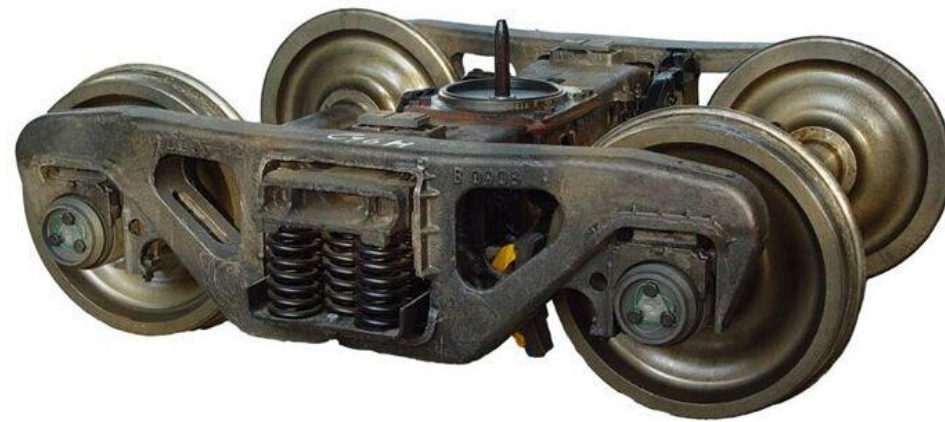
Business Departments





走行部

Running Gear Department



Bogie is one of the most important components in rail vehicle structure. The main carrier strength specification: Conforms TB1335-1996 "Railway Vehicle Identification strength design and test specifications"

Structure:Welding bogie frame, three-piece bogie, quasi Bogie:

spring rigging:

Primary spring suspension

Secondary spring suspension





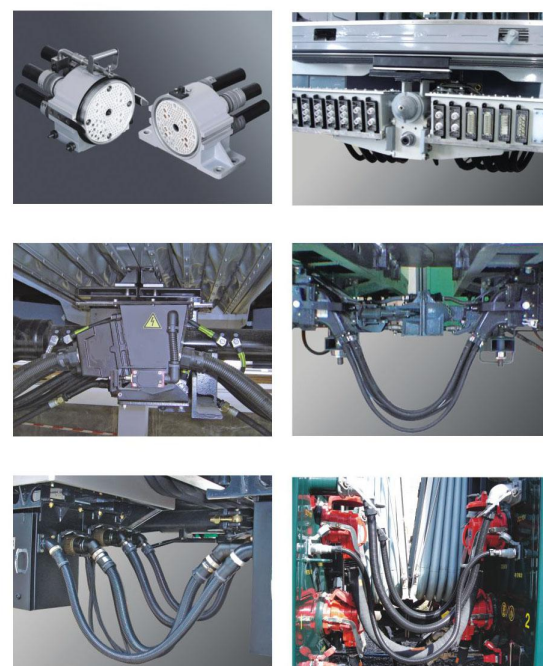
电气部

Electric Department

- Lighting system
- LED Reading light
- LED Down light
- LED Spot light
- LED Tail light
- Door indication light
- LED Step light
- LED Wall/Top light



- Railway fan
- Ceiling fan
- Exhaust fan
- Wall fan
- Axial Fan
- Hongyun fan



Railway connector system

Connector is an important device for use in a railway or rail vehicle, is one element of a rail vehicle system. Under physical force it can be used to link through which the train or rail vehicle marshalled finished, make sure you can drive the car when the organ or fixed power train a group of railroad car moves unpowered passenger car or railway freight cars, making it at the same time synchronous connections, thus ensuring smooth operation of the entire section rail train.

Railway HVAC system

Each car will be equipped with one compact roof-mounted HVAC units, which are located on the roof of the car. The air-conditioning unit consists of one air handing chambers and one compressor/condenser set. Three sections are mounted on a common frame.

The technical connection of HVAC unit is done via hating-type connectors



Railway traction motor

Railway power traction motors for locomotives, mining electric locomotive, electric locomotive and a variety of electric vehicles (such as a battery car, city trams, subway electric vehicles) on. Traction motor including traction motors, traction generator, auxiliary motor.

Valve Regulated Lead Battery

The basic features are not add acid with water during use and maintenance, the battery is sealed structure, will not leak acid, it will not discharge the mist, a one-way exhaust valve (also called safety valve) on the battery cover, the role of the valve is when the amount of gas inside the battery exceeds a certain value (usually represented by the pressure value), that is, when the battery internal pressure rises to a certain value, the exhaust valve opens automatically, the exhaust gas, and then automatically close the valve, preventing air from entering the internal battery.





链接部

Coupling Department

Coupler & Draft Gear System

Coupler (or coupling) is a mechanism for connecting rolling stock in a train. Based on the structure, the coupler has screw coupler, tight-lock automatic coupler, automatic coupler and rotary coupler. Nowadays, the automatic coupler is the main type applied to railway vehicles in many countries.

We have advanced computer aided design (CAD), computer aided manufacturing (CAM), auxiliary management system and complete manufacturing & testing equipments, 3 D laser scanner was introduced for the product testing too. At the same time, we introduced a high degree of automation professional line for castings flow-line production, which ensures production workmanship, quality, quantity, and time of delivery.

We strictly execute according to the standards AAR, GOST, UIC, TB/T, ISO, etc. Now our products include AAR E, F, EF, FR coupler, Russia CA3 (SA3) coupler, ABC coupler, and other types of coupler with 10A contour, China coupler, etc. and its components.

For the draft gear, we have spring friction type and elastomeric type, capacity from 20kJ to 80kJ, stroke from 30mm to 83mm.

Besides, we could provide turnkey solution for the coupler and draft gear system complete with accessories, such as strike, follower, lug, etc.



Gangway System

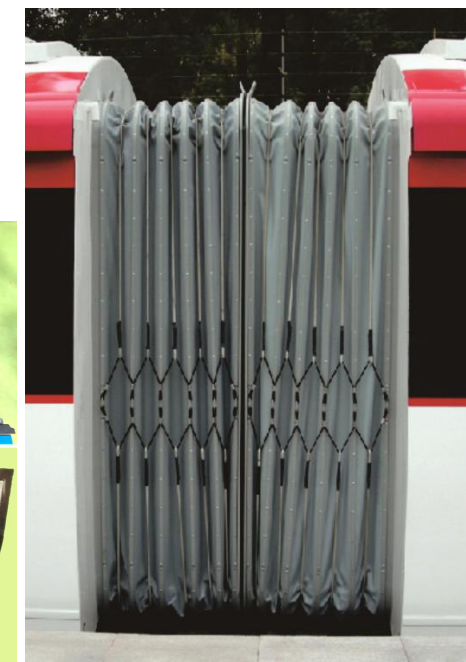
Gangway system is a flexible connector fitted to the end of railway coach to enable passage from one coach to another without falling out of the train. It is a flexible part allowing the relative movements between the coaches and offering passengers a secure and comfortable passageway.

Rubber vestibule diaphragm, simple structure, economic and practical, is widely applied to big railroad coaches. Capsule gangway is applied to metro. Our product conforms to UIC845, DIN5510, DIN53438, etc.



Pucker vestibule diaphragm, gangway bellows, are widely applied to high class train, metro, trams, etc. We could supply the complete set including bellows, side wall (flexible plate), bridge plate, ceiling plate, gap protector.

70% and 100% low floor articulation, it mainly includes fixed, flexible and free articulation, bridge plate, is applied to light rail, trams, etc.



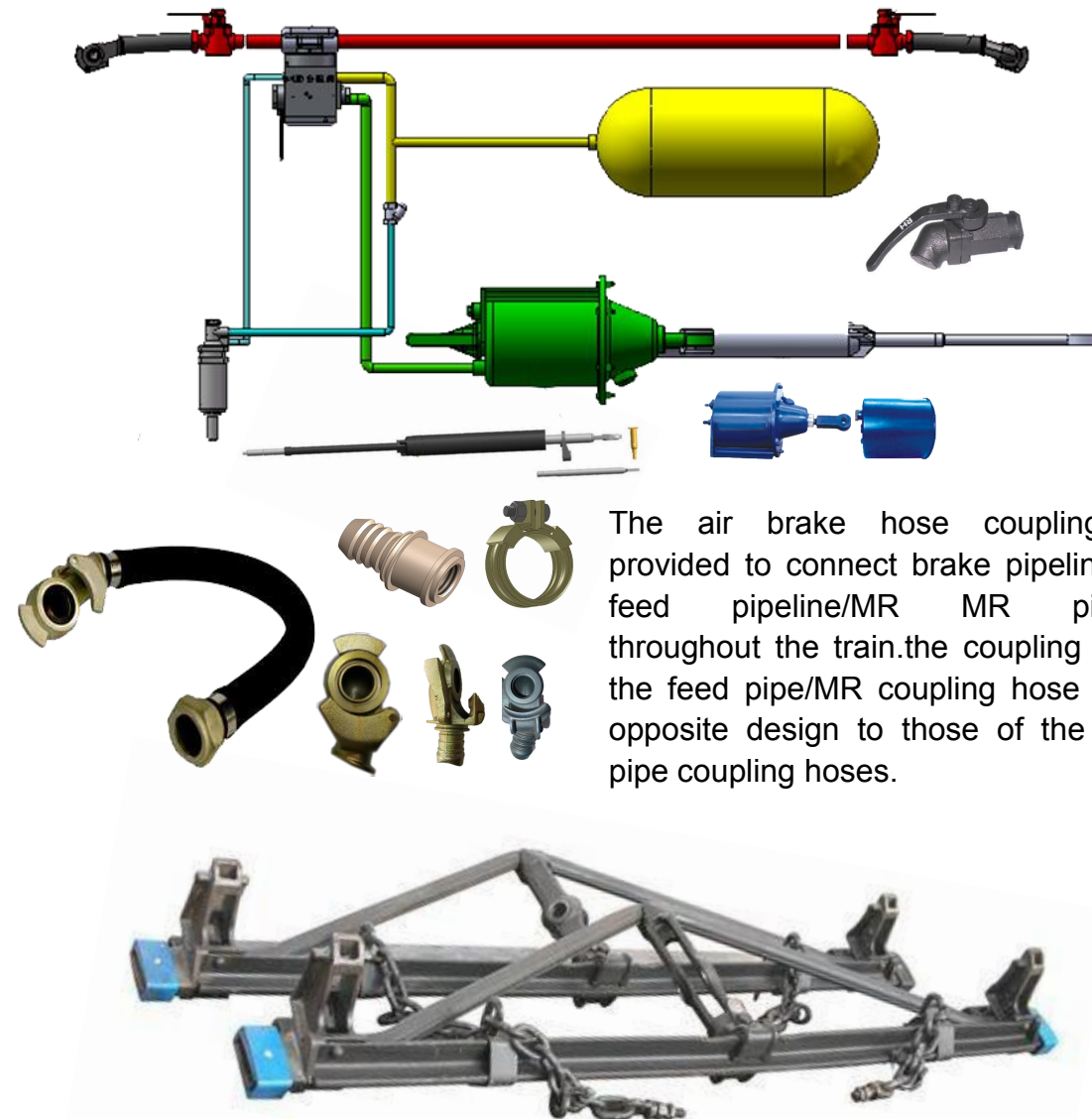


制动部

Braking Department

Railway air brake system:

uses air pressure to charge air reservoirs (tanks) on each car. Full air pressure signals each car to release the brakes. A reduction or loss of air pressure signals each car to apply its brakes, using the compressed air in its reservoirs, which include distributor valve, air brake cylinder, slack adjuster, coupling hose, angle cock, etc.



The air brake hose coupling are provided to connect brake pipeline and feed pipeline/MR MR pipeline throughout the train. the coupling heads the feed pipe/MR coupling hose are of opposite design to those of the brake pipe coupling hoses.

Brake beam of railway vehicle is the most important part of the foundation brake device, mainly to the vehicle braking, the braking force to the brake shoe brake beam passing through, to stop a vehicle. Brake beam is divided into tension rod brake beam, steel brake beam, composite brake beam.

内室产品

Interior



Windows are the Windows of the vehicle 4 walls set, to shelter from the rain, but does not keep out the line of sight, the window generally use glass material, as time changes, the window glass also with each passing day.



Train hard seat, seat and back filling is less, is one of the cheapest train ride.

Outside the framework of the material is iron plate welding, bread a layer of artificial leather (mesh), between sheet metal and leather with bubbles



The toilet is made of stainless steel
The material of metope and sink is molding glass fiber reinforced plastic.



其他工具及设备

Other Tools & Equipment



Spring tester



Wheel Diameter Measuring Instrument



Hydraulic Transmission



Infrared Curing Lamp



Railway Lifting jack:



Milling and Drilling machine

国际市场

International Marketing

Hengtai has already launched in markets of Asia, Europe, Australia and other districts in the world. Meanwhile, with the fierce international competition, we are improving technology of products continuously, so that Hengtai can meet customers' needs and provides them with efficient, convenient and accurate service.

